

# MONTHLY MEMBERSHIP PROGRESS REPORT

District 27 B1

Results as of: 5/31/2020

GMT:

LOCATION WISCONSIN

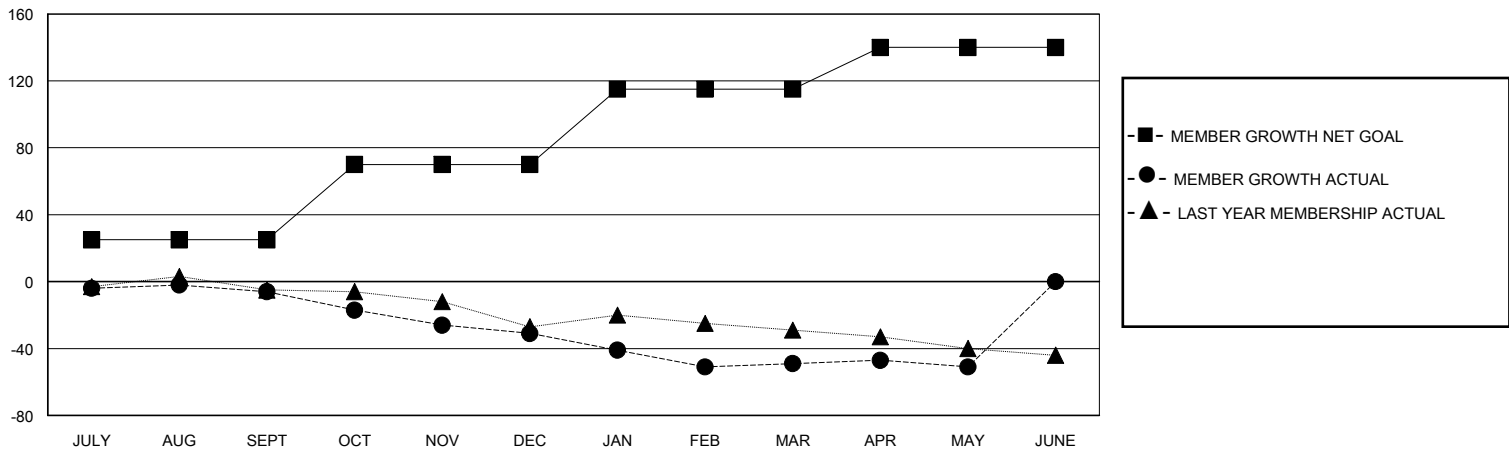
GMT CA

Clubs				Members			
RESULTS FOR 2019-2020				RESULTS FOR 2019-2020			
QUARTER	NEW CLUB GOAL	NEW CLUBS	DROPPED CLUBS	QUARTER	MEMBER GROWTH NET GOAL	MEMBER GROWTH ACTUAL	DROPPED MEMBERS ACTUAL (including transfers)
JULY/AUG/SEPT	0	0	0	JULY/AUG/SEPT	25	35	39
OCT/NOV/DEC	0	0	0	OCT/NOV/DEC	45	34	56
JAN/FEB/MAR	0	0	2	JAN/FEB/MAR	45	42	49
APR/MAY/JUNE	0	0	0	APR/MAY/JUNE	25	9	9

GOALS AND ACTUAL NEW CLUBS CUMULATIVE



GOALS AND ACTUAL MEMBERS CUMULATIVE



DROPPED CLUBS: 2	36 CLUBS OF 67 ADDED 1 OR MORE NEW MEMBERS	<b>GENDER DISTRIBUTION</b> MALE 1,454 (76.21%) FEMALE 454 (23.79%)
<b>DROPPED MEMBERS</b> DECEASED 28 CLUB CANCELLED 5 OTHER 120 TOTAL 153	<a href="#">CLICK HERE FOR CUMULATIVE MEMBERSHIP DATA</a>	TOTAL FAMILY UNIT MEMBERS 379 FAMILY MEMBERS PAYING HALF DUES 193